

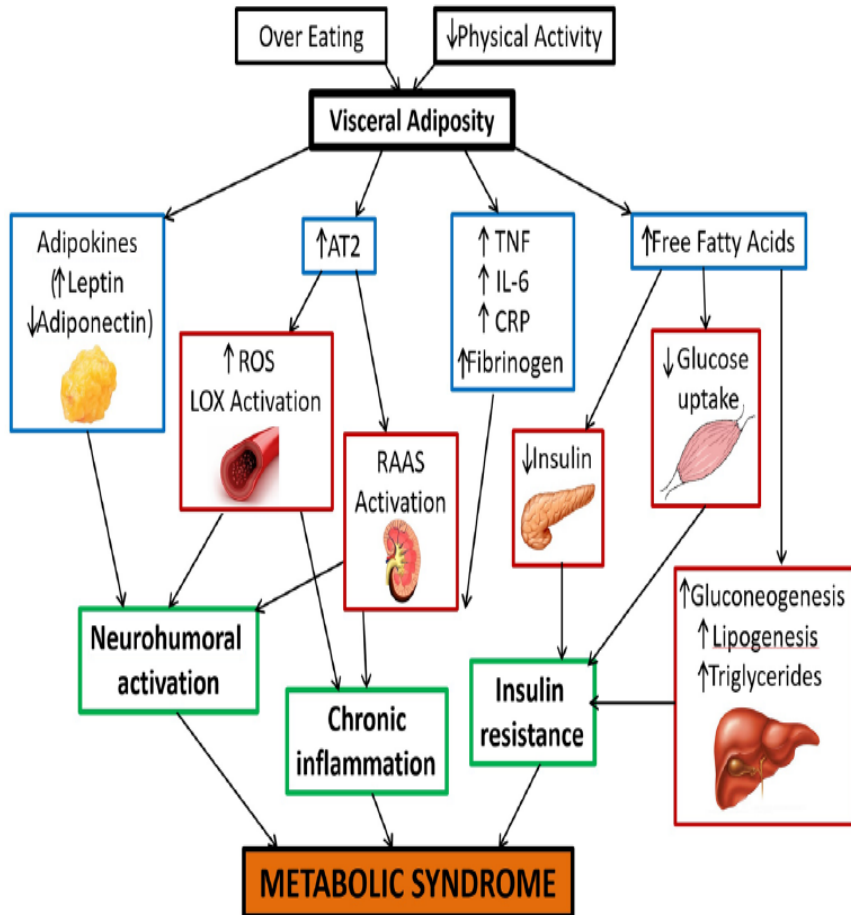
Exploring Metabolic Syndrome Genetic Susceptibility for The Individualized Management; Is it Feasible for Practice?

Mohammad Saifur Rohman

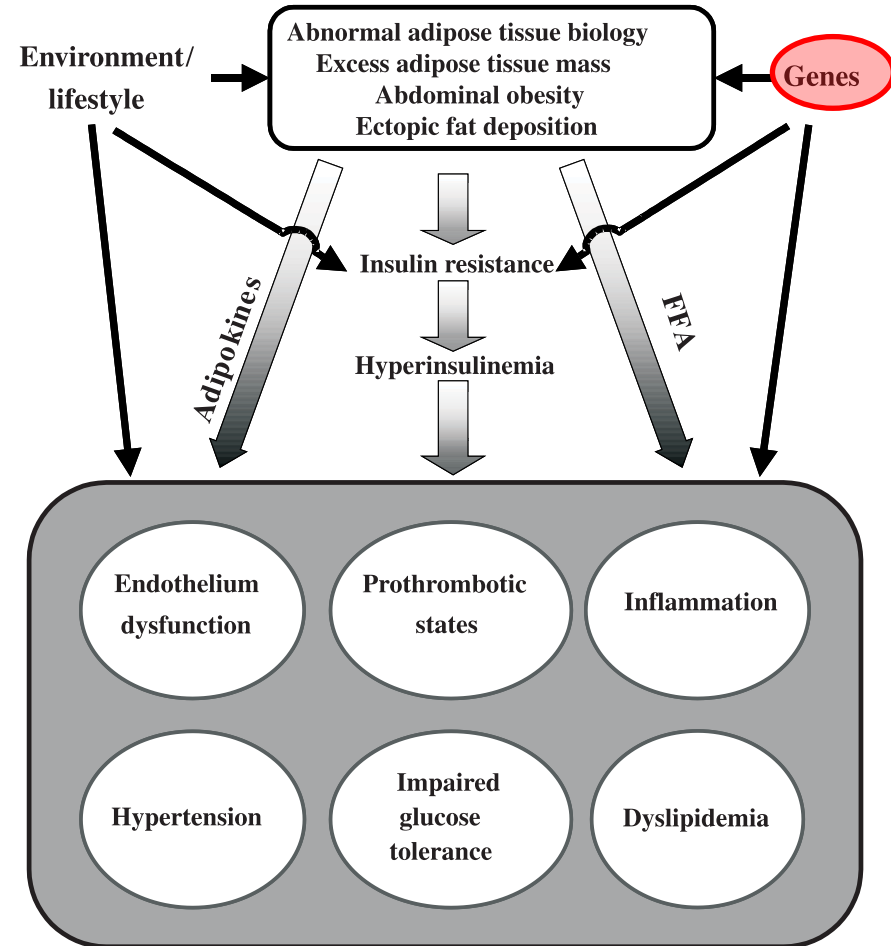
Department of Cardiology and Vascular Medicine

Faculty of Medicine, Brawijaya University/dr. Saiful Anwar Hospital, Malang

Pathophysiology Perspective



Genetic-Pathogenesis Perspective

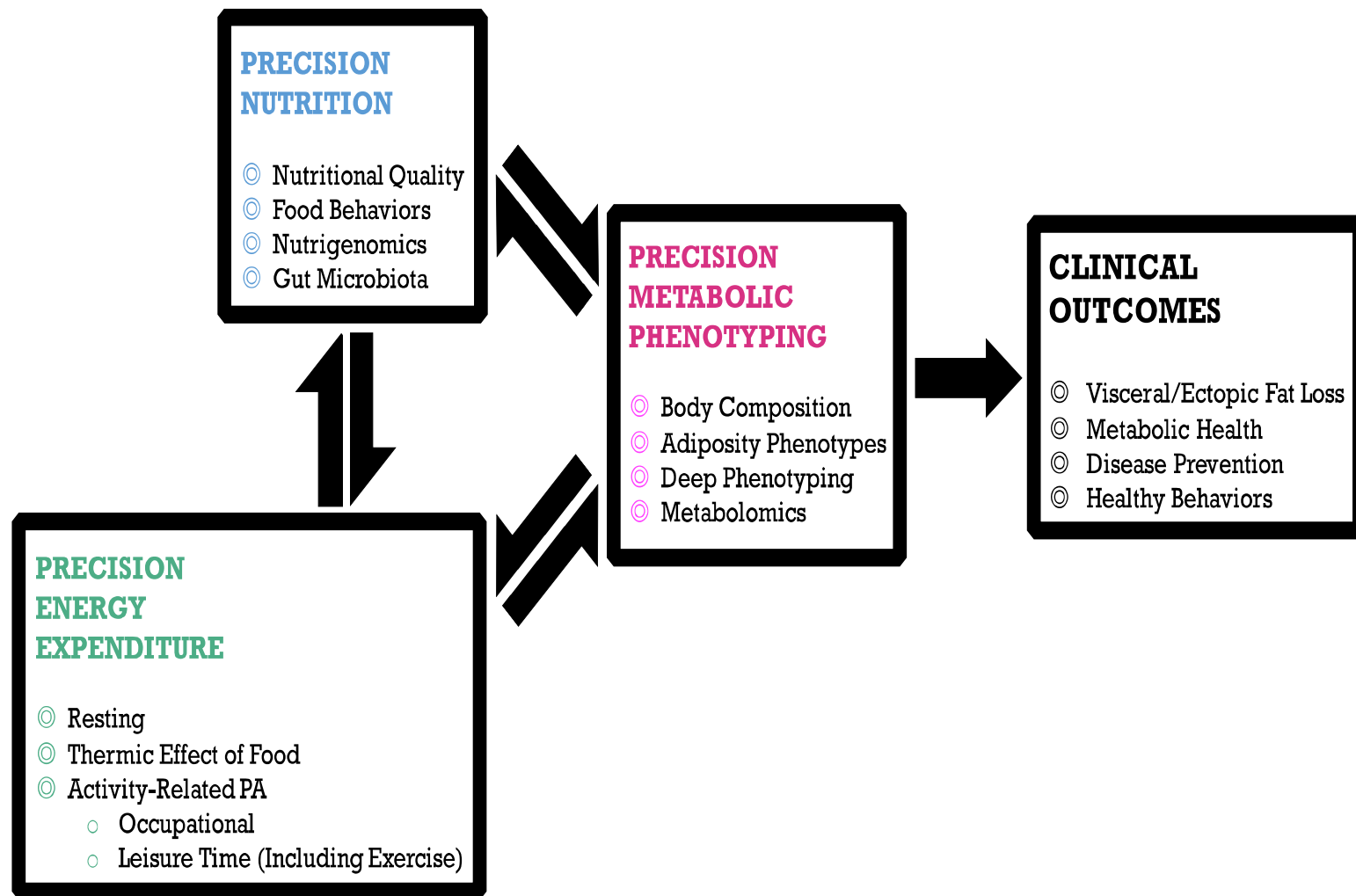


Mets Related Genes: Diverse Across Population

Genetic loci have been attributed for strong association with MetS.

- *BUD13*, *ZNF259*, *APOA5*, *LPL*, and *CETP* in Europeans
- *TCF7L2*, *APOA5*, *LPL*, *CETP*, *APOE*, and *APOC1* in African Americans
- *CA10* and *CTNNA3* in Africans
- *APOA1/C3/A4/A5* gene cluster region in Finnish
- *APOA5*, *BUD13*, and *ALDH2* in Han Chinese
- *LPL*, *MYL2*, *CCDC63*, and *CETP* in Koreans
- *APOA* and *COLEC12* in Taiwanese
- These studies highlight multiple shared lipid metabolism pathway genes across diverse populations as well as novel population-specific genes

Intake- Expenditure prepective



Future Direction and Challenge

